



# Every modern retail enterprise needs the Juniper network, driven by Mist AI.

Here's why.



Deliver innovative connected services that meet the needs of today's customers, in-store and online; make informed decisions to support operational and commercial objectives; and implement universal changes swiftly and reduce IT operations workload.



## Enrich and Streamline the Customer Experience

- Provide automated services, such as self-checkouts, curbside pickups, and stock checking.
- Use Mist's built-in virtual location services for footfall tracking, proximity tracing, and congestion alerting.
- Provide store plans and turn-by-turn directions to help customers locate the item they are looking for.
- Use the accuracy of virtual beacons (under 1m) to deliver on-the-spot information, such as alerts, menus, or relevant offers.



## Make Informed Decisions

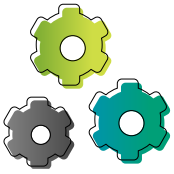
- See the entire customer journey, from user to app: not just the intended experience, but the customer's actual experience, whichever store or the country they are in. A clear visualization is presented on a custom dashboard, based on target service levels and minimum SLAs.
- Analyze customer footfall data, pedestrian flow, and dwell time to inform staffing levels, store layouts, future promotional strategies and more.
- Look at staff footfall to understand how to better schedule their time, or organize stockroom areas.
- Support IoT sensors for vital CMMS and equipment monitoring (for example, heated cabinets, refrigeration, freezers, heating, and A/C).



## Secure Data and Assets

- Protect your commercial and customer data across the network, with enterprise-level security extended to all users.
- Find people, places, and things on site using Mist's built-in location services. If a lost tablet or device is Bluetooth-tagged, you'll still be able to find it.





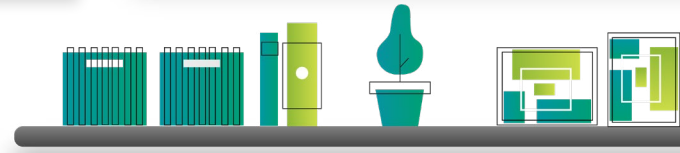
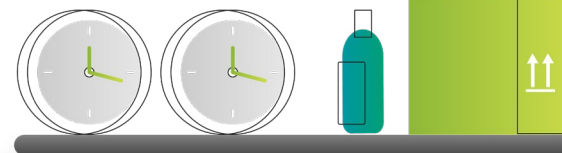
## Reduce IT Operations Workload

- Stand back and let Marvis, Mist AI's Virtual Network Assistant, monitor the network and carry out proactive remediation to continually optimize the user experience.
- Let automated troubleshooting dramatically reduce the number of network tickets while fixing issues more and more quickly as it learns over time.
- Marvis automatically looks for client-to-cloud anomalies and will capture the relevant packets to provide the information needed to resolve any issues.
- There's no need to send engineers out to the store to begin their search on-site. No travel, no time spent on a laptop looking for the problem, no delays, no more sending IT team members out to address the same problems in different locations.



## Implement Universal Changes Swiftly

- Because the Mist has a modern microservices cloud-based architecture, you can swiftly make changes across your entire estate.
- Having centrally-managed devices means that changes can be made universally if required, for example, when deploying a new promotion into stores, or making time-sensitive operational changes.



## No Batteries Required

Juniper's AI-driven network has location services built in: virtual Bluetooth LE beacons with directional antenna array are built into every access point.

There are no complex architectures with limited scale, no battery beacons, and no time-consuming and costly fingerprinting.

## Deployment is Swift and Straightforward

Mist APs only need to be plugged in to be serving within minutes. This 'plug and play'-style approach includes automatic configuration, which makes deployment exceptionally easy, and makes migration a straightforward exercise that won't require thousands of (expensive) technical man-hours to be spent on repetitive configuration tasks.

Our Retail Variety Show features real-world examples, demos and technical insight.

Watch the video:  
[juniper.net/retail-variety-show](http://juniper.net/retail-variety-show)

Juniper has an expert team dedicated to supporting the networking needs of retail enterprises.

Connect with our specialists:  
[juniper.net/retail-contact-form](http://juniper.net/retail-contact-form)



### Corporate and Sales Headquarters

Juniper Networks, Inc.  
1133 Innovation Way  
Sunnyvale, CA 94089 USA  
Phone: 888.JUNIPER (888.586.4737)  
or +1.408.745.2000  
Fax: +1.408.745.2100  
[www.juniper.net](http://www.juniper.net)

### APAC and EMEA Headquarters

Juniper Networks International B.V.  
Boeing Avenue 240  
1119 PZ Schiphol-Rijk  
Amsterdam, The Netherlands  
Phone: +31.207.125.700  
Fax: +31.207.125.701

PN: 9040178-001-EN